

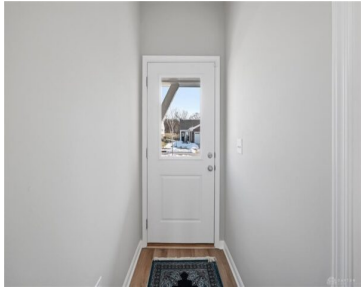
415, SUMMERLYN FARMS, COURT, LEBANON, OH, 45036

<https://www.flourishteam.com>

415, Summerlyn Farms, Court, Lebanon, OH, 45036



\$322,000



Welcome home to carefree living in Summerlyn Farms! This gorgeous Fischer Wembley Paired Patio Home shows like a brand-new model and has been meticulously maintained. Designed with a desirable split floorplan and open-concept living spaces, this home offers both comfort and functionality. The spacious primary suite serves as a private retreat, complete with an adjoining [...]

- 2 beds
- 2.00 baths
- Attached Homes
- Residential
- Active
- 1260 sq ft

Rooms & Units Description

Rooms Total: 7

Room Count: 7

Number Of Full Baths On Level 1: 2



Location Details

County Or Parish: Warren

School District: Lebanon

Zoning: Residential

Property Details

Lot Dimensions: 37 x 105

Parcel Number: 12122860090

Construction Type: Brick

Levels: 1 Story

Subdivision Name: Summerlyn Farms

Distressed Property: None

Transaction Type: Sale

Property Features

Outside Features: Cable TV,Patio,
Cable TV,Patio

Inside Features: Electric Water Heater,High Speed
Internet,Paddle Fans,Smoke Alarm(s),Walk in Closet

Utilities: City Water,Sanitary Sewer

Appliances: Dishwasher,Garbage
Disposal,Range,Refrigerator

Basement: Slab

Windows: Insulated

Heating: Electric,Heat Pump

Cooling: Central

Kitchen Features: Open to Family
Room,Pantry,Stone Counters

Garage: 2 Car,Attached,Opener

Miscellaneous



Virtual Tour URL:

<https://view.spiro.media/order/9914abea-75c2-4fce-17e9-08de6899cc66?branding=false>

**HOA
Condo
Fee:**
185.00

HOA Fee Frequency: Monthly

**Taxes
Semi
Annual:**
446.00

Assessments: Of Record

Courtesy of

Office Name: Comey & Shepherd REALTORS

Agent Email: tjohnsonsell2buy@gmail.com

Agent Name: Teresa M Johnson

Agent Phone: (513) 836-6766

