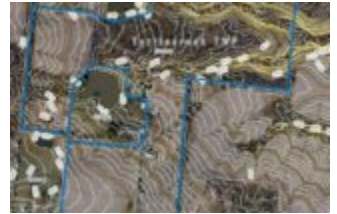


OH-63, OHIO, USA

<https://www.flourishteam.com>

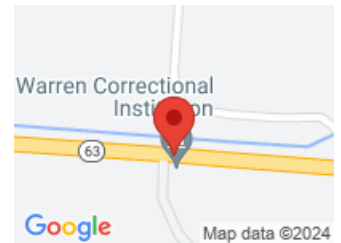
OH-63, Ohio, USA

\$ 3,675,000.00



Acreage totaling 73.5 Acres! Great opportunity and prime location! Minutes from downtown Lebanon, Miami Valley Gaming, Otterbein & outlet mall off 75. Lots of Frontage! Northern half features walking trails, ravine & creek! Warren County Water, cable at street, electric by Duke Energy! Potential Commercial up front, residential in rear....

- Acreage
- Land
- Active



CALL US NOW

Phone: (937) 637-7333

Address: 1210 Meadow Bridge Drive, Suite C, Beavercreek, OH 45434

BASIC FACTS

Date added: 11/05/21	Post Updated: 2021-11-05 20:00:15
Type: Acreage	Status: Active
Acres: 73.5056	MLS #: 852815
Listing Contract Date: 2021-11-05	

LOCATION DETAILS

County Or Parish: Warren	School District: Lebanon
Directions: From 75 take 63 East. Look for For Sale Sign on Left several miles past 741.	Zoning: Residential,Commercial

PROPERTY DETAILS

Lot Dimensions: of record	Parcel Number: 12183000200
Distressed Property: None	Transaction Type: Sale

PROPERTY FEATURES

Land Features: Wooded	Utilities: City Water,Septic,Utilities at Street
Road Type: none	Frontage: 1183
Timber: 35	

MISCELLANEOUS

Taxes Semi Annual: 0.00	Assessments: of record
--------------------------------	-------------------------------

CALL US NOW

Phone: (937) 637-7333
Address: 1210 Meadow Bridge Drive, Suite C, Beavercreek, OH 45434