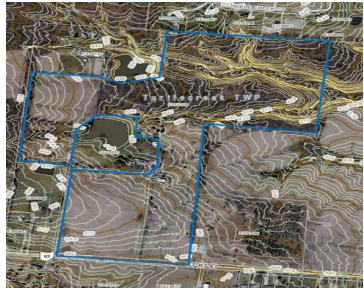


ST RT 63, TURTLECREEK TWP, OH, 45036

<https://www.flourishteam.com>

St Rt 63,
Turtlecreek Twp,
OH, 45036



89.34-acre development opportunity on State Route 63 in Lebanon/Warren County. Rare contiguous tract in the Gateway to Lebanon growth corridor, positioned between Cincinnati, Dayton, and Columbus and near Mason, Springboro, Monroe, I-75, Union Village, Parkside, Warren County Sports Park, Miami Valley Gaming, and historic downtown Lebanon. Open canvas for residential, mixed-use, commercial, senior, hospitality, or [...]

- Acreage
- Land
- Active

Location Details

County Or Parish: Warren

School District: Lebanon

Zoning: Residential,Commercial



Property Details

Lot Dimensions: of record
Aerial YN: 1
Transaction Type: Sale

Parcel Number: 12183000200
Distressed Property: None

Property Features

Land Features: Wooded
Road Type: none
Timber: 35

Utilities: Public Water,Utilities at Street
Frontage: 1183

Miscellaneous

Virtual Tour URL: https://youtu.be/y2DE9jNF_tE **Taxes Semi Annual:** 0.00
Assessments: of record

Courtesy of

Office Name: Keller Williams Advisors Rlty
Agent Email: johnbissman@kw.com

Agent Name: John M Bissman
Agent Phone: (513) 800-0675

